



Parkhill Road NW3

Parkheath
Sold on Service





Parkhill Road, NW3, Asking Price £800,000, Leasehold

Camden Band E

- A fabulous, well proportioned 2 double bedroom apartment
- Well maintained communal gardens
- Attractive semi detached period conversion
- Entire second floor (top) over 700 sq ft
- Great natural light throughout
- Bright 18ft reception
- Separate 10ft kitchen
- 14ft rear facing main bedroom with built in wardrobes
- 125 years from 1995
- Close to Belsize Park amenities as well as Hampstead Heath

Belsize Park/Hampstead
208 Haverstock Hill
NW3 2AG
Sales 020 7431 1234
Lettings 020 7431 3104
nw3@parkheath.com

South/West Hampstead
192 West End Lane
NW6 1SG
Sales & Lettings
Tel 020 7794 7111
192@parkheath.com

Kensal Rise
54-56 Chamberlayne Rd
NW10 3JH
Tel 020 8960 4845
kensal@parkheath.com

Property Management
192 West End Lane
NW6 1SG
020 7433 6174
pm@parkheath.com

Parkheath
Sold on Service

www.parkheath.com

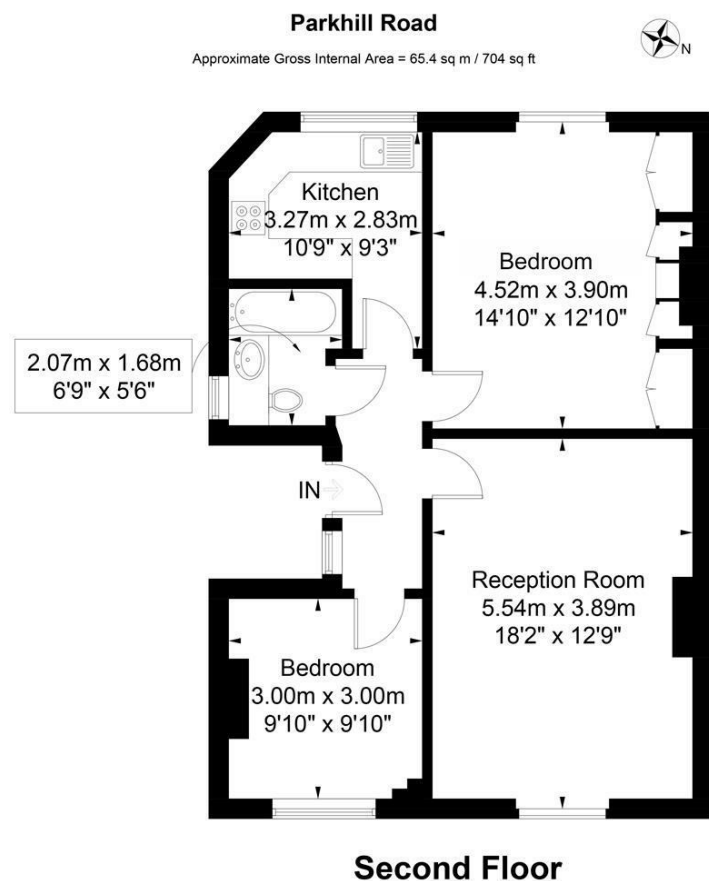
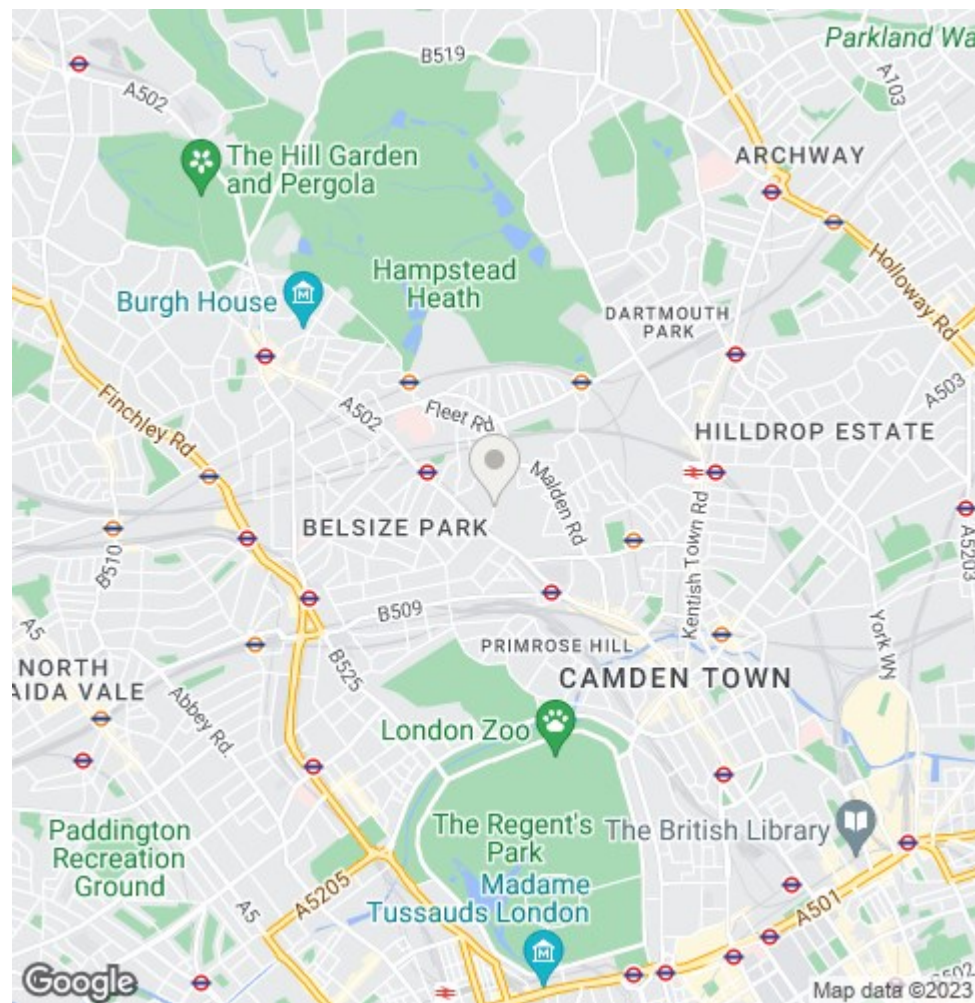


Illustration for identification purposes only, measurements are approximate, not to scale. FloorplansUsketch.com © 2018 (ID406005)
ELLIE CLAIRE PHOTOGRAPHY LTD



The particulars do not constitute part of an offer or contract. The particulars, including text, photographs and plans, are for the guidance only of prospective purchasers/tenants and must not be relied upon as statements of fact. The descriptions provided therein represent the opinion of the author and whilst given in good faith should not be construed as statements of fact. Nothing in these particulars shall be deemed a statement that the property is in good condition or otherwise or that any services or facilities are in good working order. All measurements are approximate